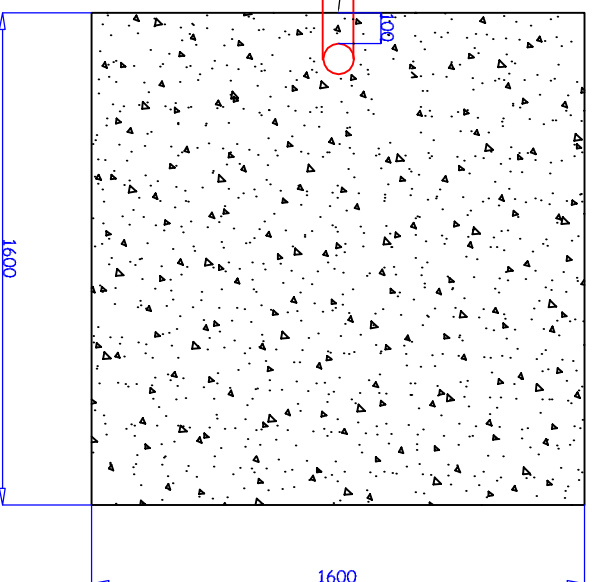


### Plan view

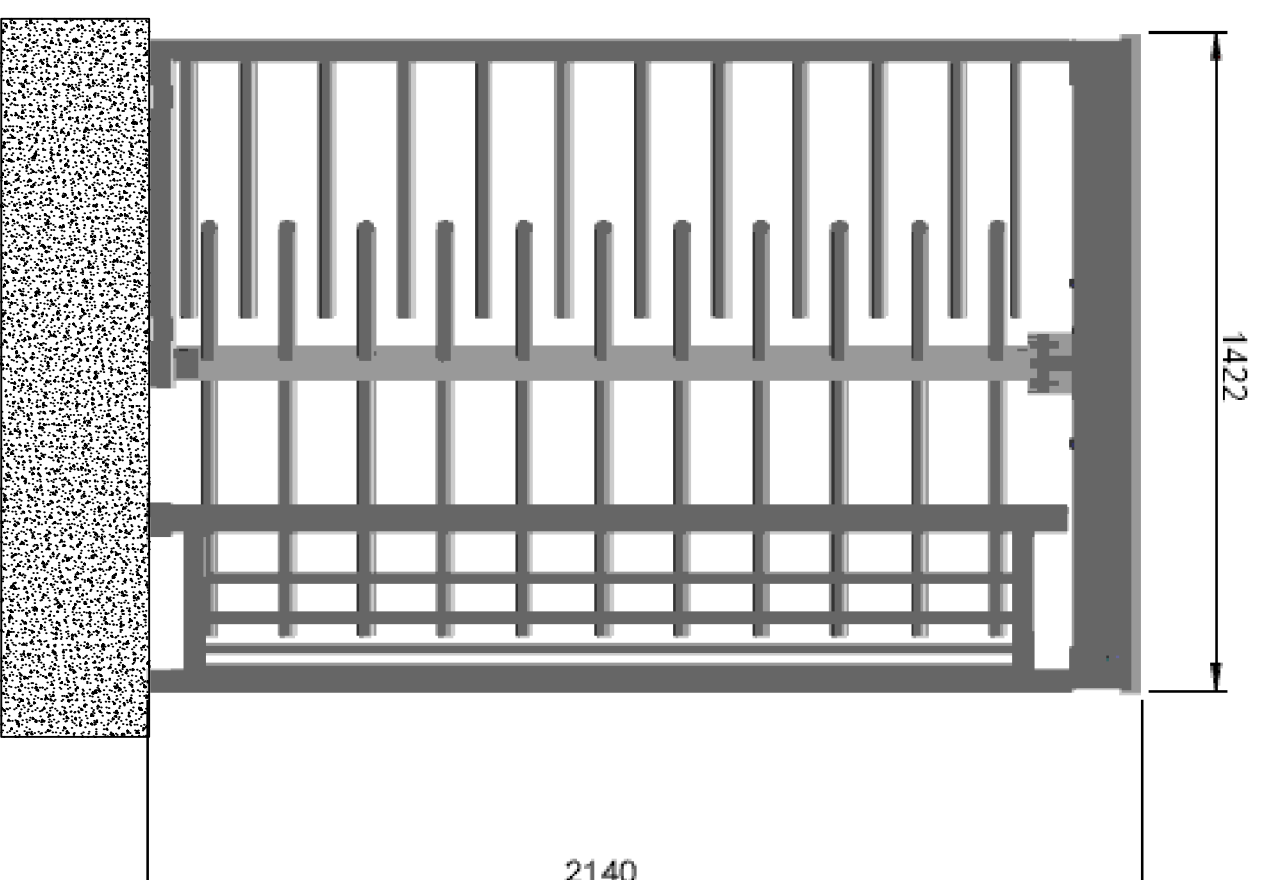
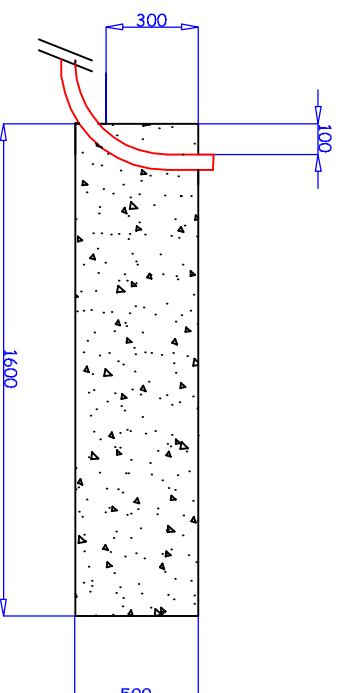
50mm Duct for power/control cables with min 300mm radius bends.  
This must enter at a tangent to the base so as not to interfere with portal fixings  
The ducting can be installed to either side of the foundation (at the same dimension from the edge) if required



#### Power supply and cable requirements

The turnstile system requires a 240v 10A power supply, in the form of an SWA cable of suitable diameter surfacing from installed ducting. There must be an excess of 3m of cable above foundation level.  
A Normally open volt free contact is required to release the turnstile in each direction.  
Any cables required for the access control system are extra to these details.

### Cross Section



Automatic Barriers, Gates & Turnstiles

Phone 08450 77 77 78 Fax: 0870 75 54 600

## Single Turnstile Foundation and cable requirements